

MOTORIZED WINE CELLAR GLASS HATCH - CUSTOM RAL COLOUR (640X1000 MM)

VIN-10-107-custom

Upgrade your home-built wine cellar with the Vinorage motorized glass hatch (640x1000 mm) in a custom RAL colour. Designed for flush floor installation, this Danish-designed hatch provides secure and stylish access to your underground wine storage. The electric opening system runs on 230V power and is controlled via the included control box. Choose from any RAL colour to match your interior. Standard size 640x1000 mm, with custom sizes available upon request.

TECHNICAL SPECIFICATIONS

Appearance

Material	Stainless Steel
Material	Brass

Key Specifications

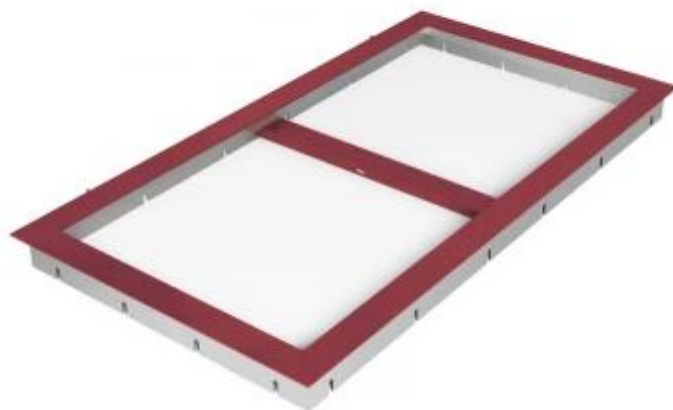
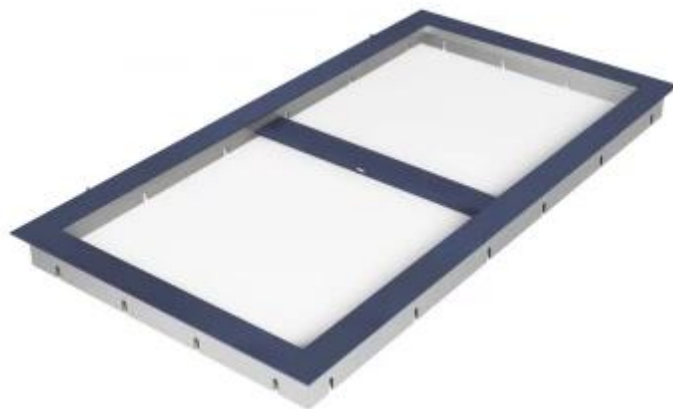
Brand	Vinorage
Warranty	2 years

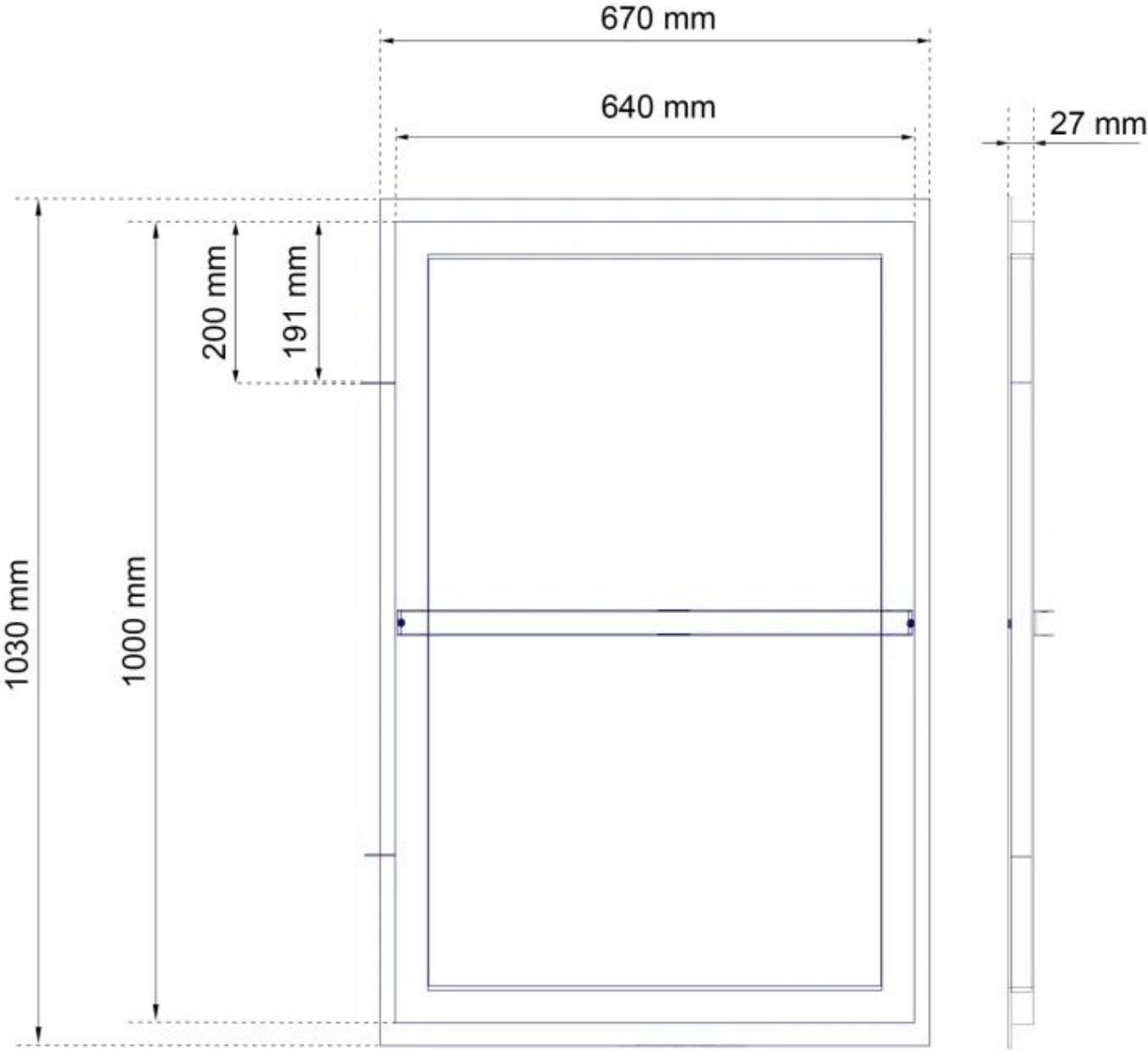
Size & Weight

Length/Width	100 cm
Depth	64 cm
Weight	80 kg

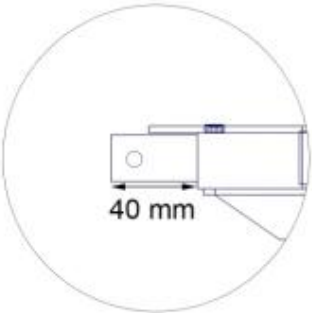
Installation details

Power requirements	Yes
--------------------	-----

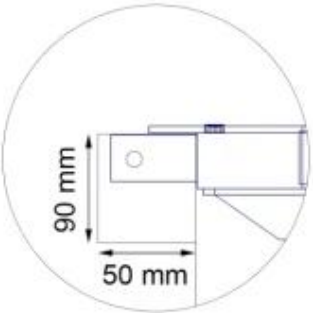




Detail D1



Detail D1 + External casing



Detail D1 + External casing
- Top view

