

MOTORIZED WINE CELLAR GLASS HATCH - BLACK (800X1500 MM)

VIN-10-108-brass

Enhance your home-built wine cellar with the Vinorage motorized glass hatch (800x1500 mm) in black steel. This Danish-designed hatch provides secure and stylish access to your underground wine storage. The electric opening system operates on 230V power and is controlled via the included control box and 4-meter connection cable. Designed for flush floor installation, ensuring a modern and seamless appearance. Standard size 800x1500 mm, with custom sizes available upon request.

TECHNICAL SPECIFICATIONS

Appearance

Material	Stainless Steel
Colour	Glass
Colour	Black

Key Specifications

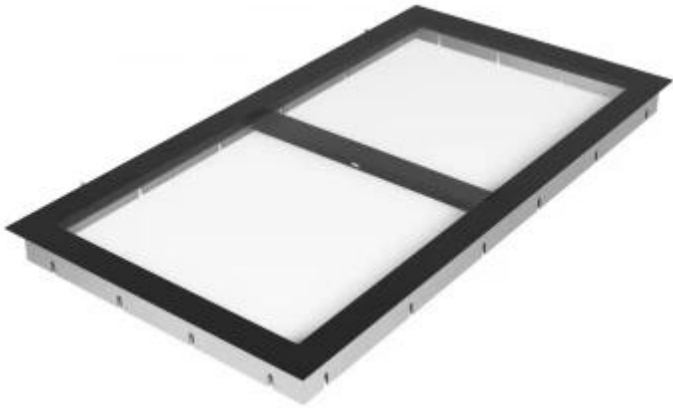
Brand	Vinorage
Warranty	2 years

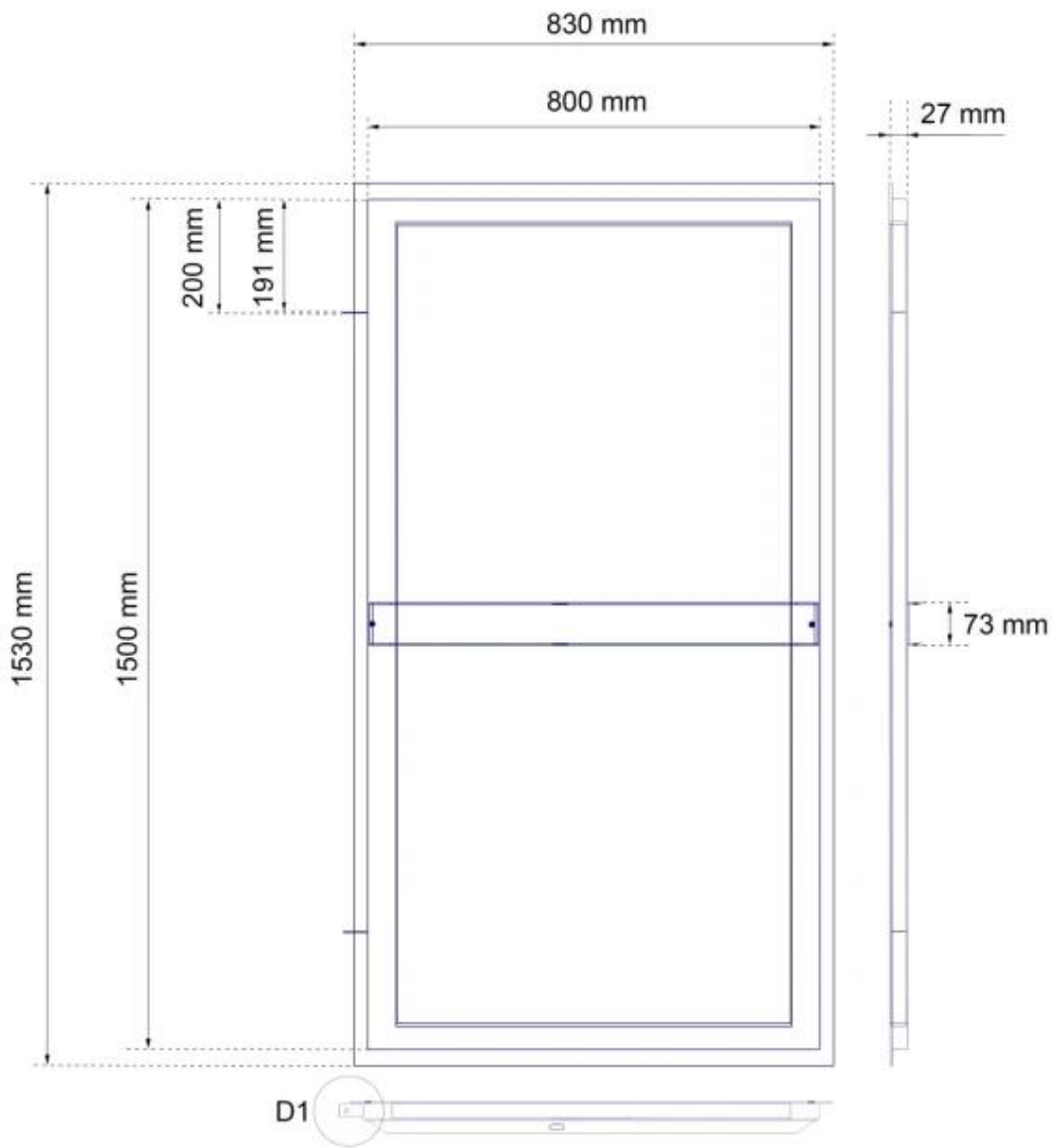
Size & Weight

Length/Width	150 cm
Depth	80 cm
Weight	120 kg

Installation details

Power requirements	Yes
--------------------	-----

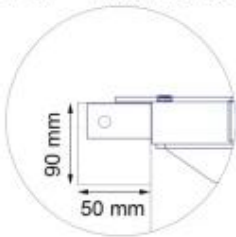




Detail D1



Detail D1 + External casing



Detail D1 + External casing
- Top view

