

MOTORIZED WINE CELLAR GLASS HATCH - STAINLESS STEEL

(800X1500 MM)

VIN-10-108-steel

Enhance your wine cellar with the Motorized Wine Cellar Glass Hatch (800x1500 mm). This stainless steel, electric floor hatch offers seamless access and a modern, flush-fit design. The motorized opening system operates smoothly with 230V power, controlled via an included 4-meter connection cable and control box. Built for durability and elegance, this Danish-designed hatch is perfect for underground wine storage. Available in custom sizes upon request, ensuring the perfect fit for your cellar.

TECHNICAL SPECIFICATIONS

Appearance

Material	Stainless Steel
Colour	Stainless Steel

Key Specifications

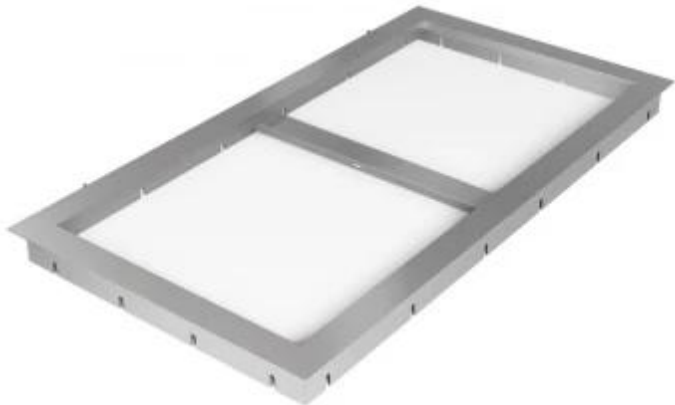
Brand	Vinorage
Warranty	2 years

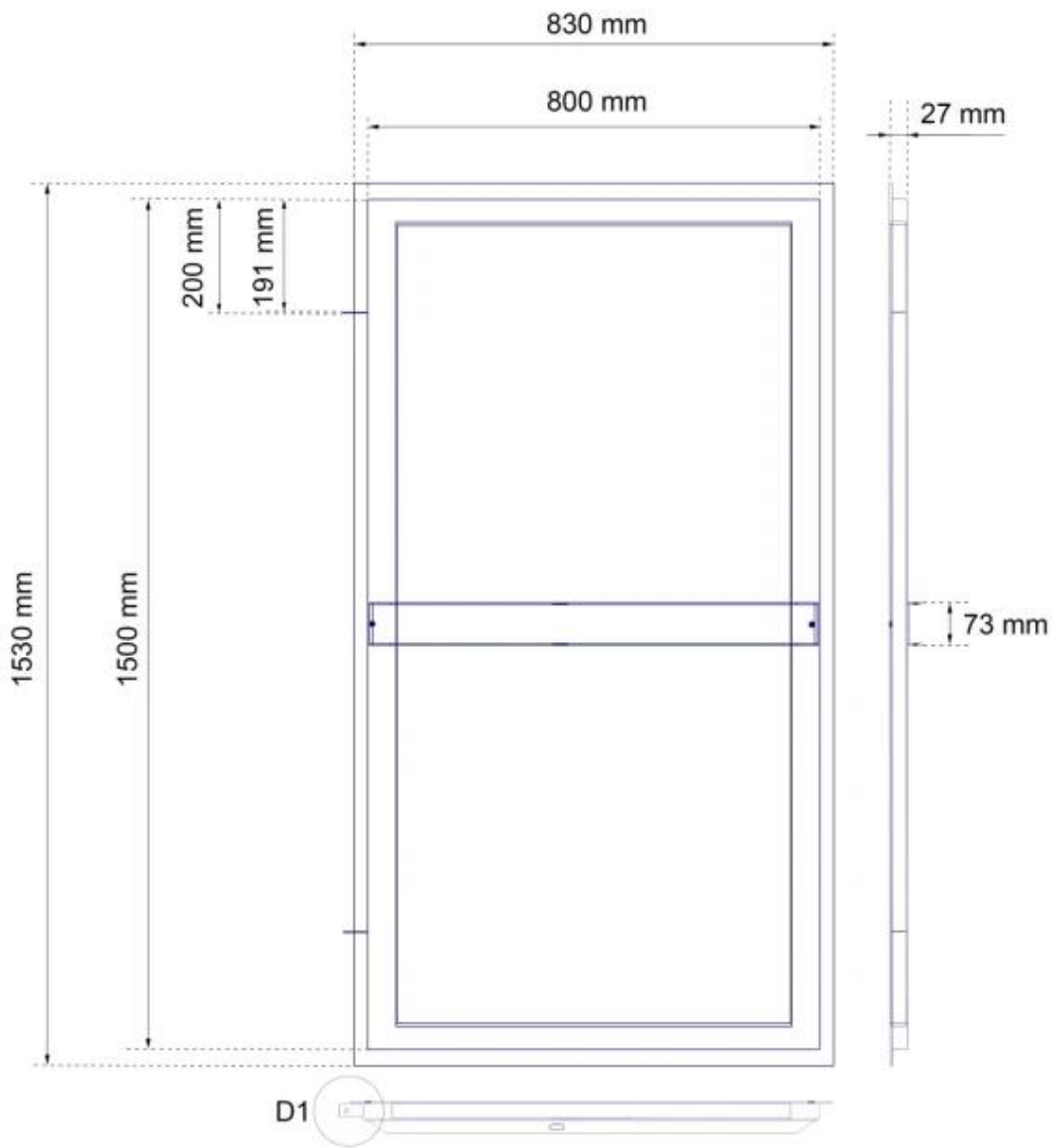
Size & Weight

Length/Width	150 cm
Depth	80 cm
Weight	120 kg

Installation details

Power requirements	Yes
--------------------	-----

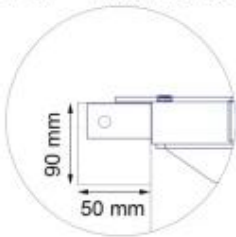




Detail D1



Detail D1 + External casing



Detail D1 + External casing
- Top view

