

MOTORIZED WINE CELLAR GLASS HATCH - STAINLESS STEEL

(640X1000 MM)

VIN-10-107-steel

Upgrade your home-built wine cellar with the Vinorage motorized glass floor hatch. Crafted from stainless steel, this Danish-designed hatch offers a sleek and secure entrance to your underground wine storage. The electric opening system operates smoothly with 230V power, controlled via an included 4-meter connection cable and control box. Designed for flush floor integration, it ensures a modern, seamless look. Standard size 640x1000 mm, with custom sizes available upon request.

TECHNICAL SPECIFICATIONS

Appearance

| | |
|----------|-----------------|
| Material | Stainless Steel |
| Colour | Glass |
| Colour | Stainless Steel |

Key Specifications

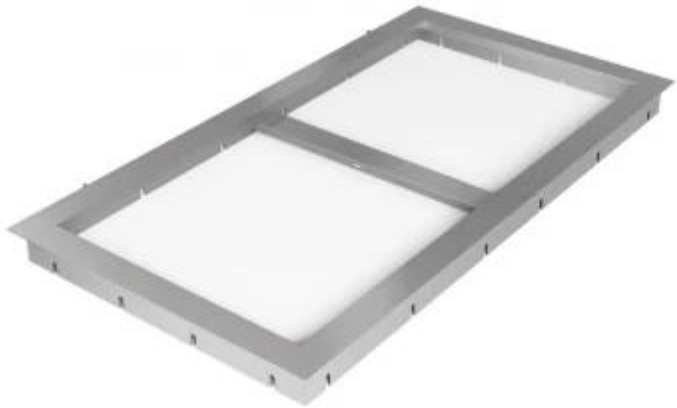
| | |
|----------|----------|
| Brand | Vinorage |
| Warranty | 2 years |

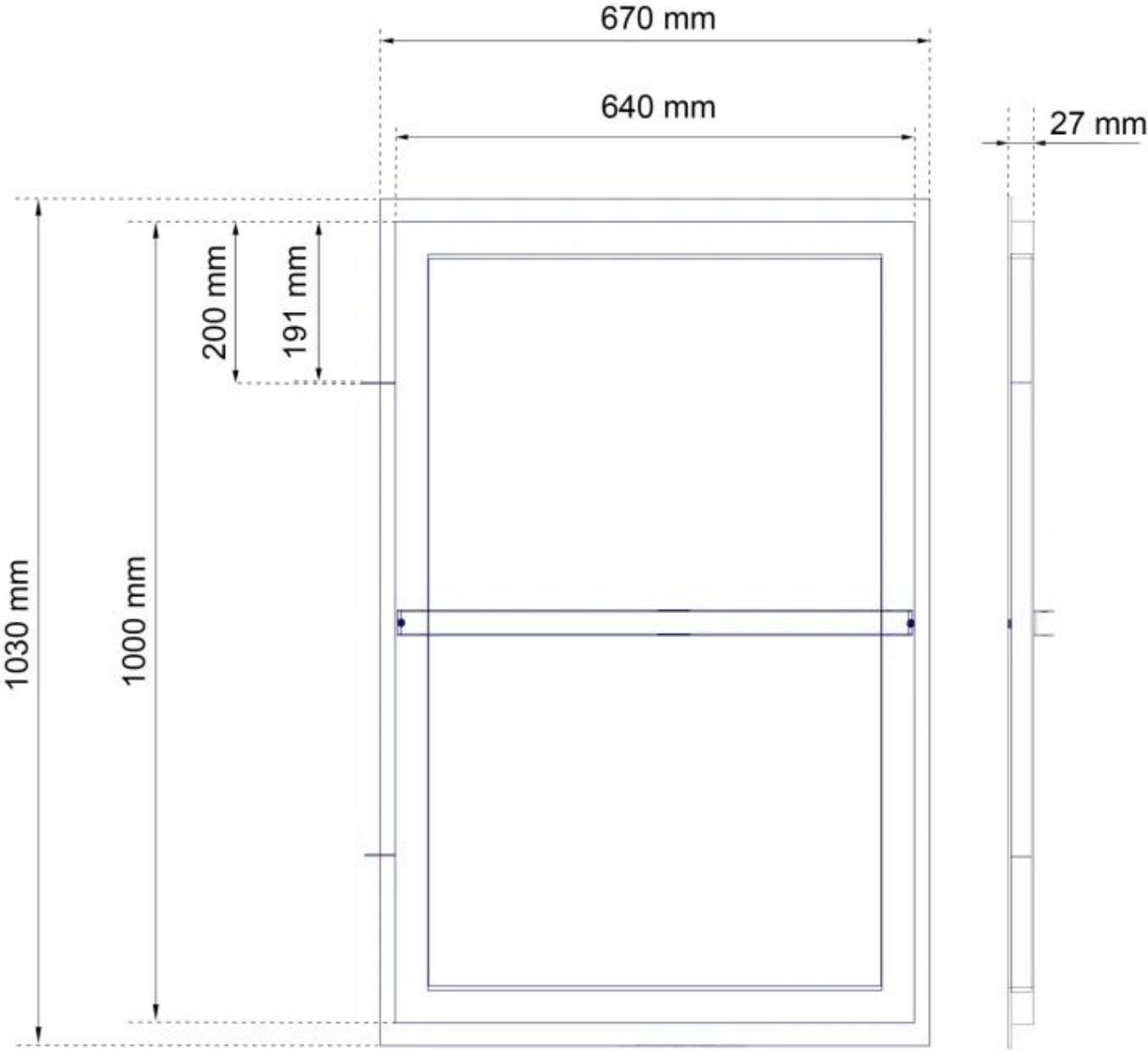
Size & Weight

| | |
|--------------|--------|
| Length/Width | 100 cm |
| Depth | 64 cm |
| Weight | 80 kg |

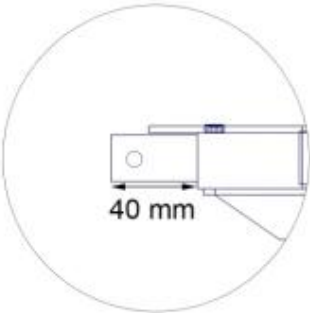
Installation details

| | |
|--------------------|-----|
| Power requirements | Yes |
|--------------------|-----|

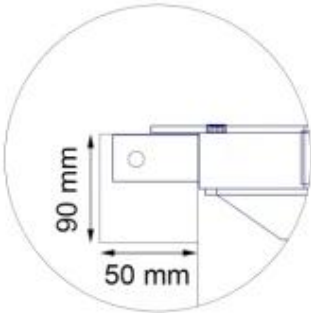




Detail D1



Detail D1 + External casing



Detail D1 + External casing
- Top view

