

HEATSTRIP ELEGANCE 3600 WATT

ELP-70-104

The Elegance 3600W can be used both outdoors and indoors, where it can heat up to 6-9 m². The patio heater must be installed by a licensed electrician.

TECHNICAL SPECIFICATIONS

Appearance

RAL9003

Features

100 cm

Type

Heatstrip

Appearance

Colour	White
Glas included	No
Materials	Aluminum

Distance

Distance to Combustible Materials	230 cm
-----------------------------------	--------

Features

Ampere	15
--------	----

Features

Control	Manual
Control	Remote Control

Features

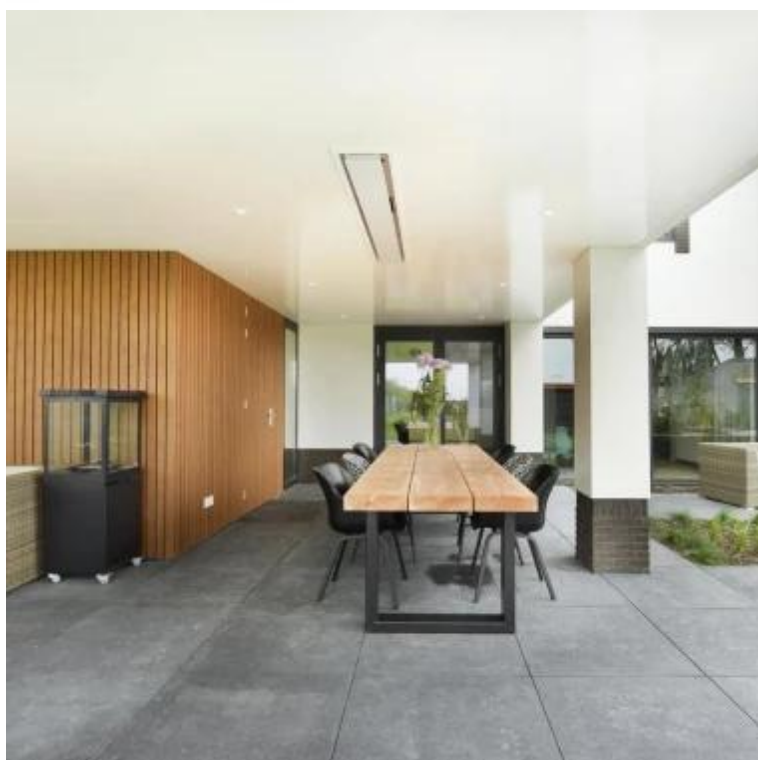
Flame	No
-------	----

Features

Fuel	Electricity
Heat output (max)	3,6 kW

Features

Heating	6-9 m2
---------	--------



Features

Remote control	Yes (add-on)
Requires electricity	230-240V
Requires electricity	Yes

Features

Timer	Yes
Type of Light	White radiation panel

Size

Depth	17 cm
Height	4,85 cm
Length/Width	180,4 cm
Weight	9 kg

Type

Brand	Heatstrip
Use	Indoor
Use	Outdoor
Warranty	2 years

